

The QL NE100 is a very powerful processor allowing complex programming to achieve project requirements. It is also a QL NET to Ethernet interface module which allows communication to the system via Ethernet.

The QL NE100 has both QL NET and DMX-512 bus. The control devices connect to the QL NET bus and the control actuators connect to the DMX-512 bus. When used in this manner, the control actuators are configured to function in DMX-512 mode. The DIN rail mountable module is totally self-contained with its own integral PSU. It can be fitted along with other modules in a panel or can be in separate panel to install in a central location to control multiple panels. The metal construction has been designed and built for safety, reliability & serviceability with standard DIN rail mountable fixing arrangement.

The controller can control up to 512 channels (including lighting control, shade control and FCU control channels) and control devices to control up to 128 different zones. The controller gives flexibility to program different lighting scenes for each zone.



- *Complex programming capabilities*
- *Controls up to 512 different channels including lighting control, shade control, FCU control etc.*
- *Controls up to 128 different control zones*
- *Connects to control devices via QL NET bus and to control actuators via DMX-512 bus*
- *In-built calendar timer*
- *In-built astronomical timer*
- *Built-in web interface for configuration*
- *DIN rail mountable*
- *Configurable via buttons on module without any computer*

Specifications

Power Supply

100-270V AC, 50/60 Hz

Power Requirement

65mA @ 230V AC

QL NET Power Supply Capacity

400mA

Protocol

QL NET, DMX-512

Connectors

QL NET : Non-detachable 4 pin 3.5mm connector

DMX-512 : 2 nos. 2.54mm 4 pin bar connectors

Power in : Non-detachable 3 pin 3.5mm connector

Ethernet Port : RJ45 connector socket

Programming Port : Type B USB connector socket

Configuration Buttons

1, 2, 3, 4, 5, 6, 7, 8, 9, CL, 0, @, ▲, ▼, ◀, ▶, OK, FCN, CH, TIME, SC, TIMER, -, ZONE and REC

hardware Reset

Miniature recessed button accessible by a pin

LED indicators

1 Red LED indicating power and 2 Green LEDs indicating communication signal status

Display

LCD

Environment

Ambient Temperature : 0°C to 50°C

Relative Humidity : less than 80%

Safety Regulatory Compliance

CE

Dimensions

215mm (W) x 88mm (H) x 57mm (D)

Weight

620g

QL NE100

CONTROLLER MODULE / QL NET – ETHERNET INTERFACE

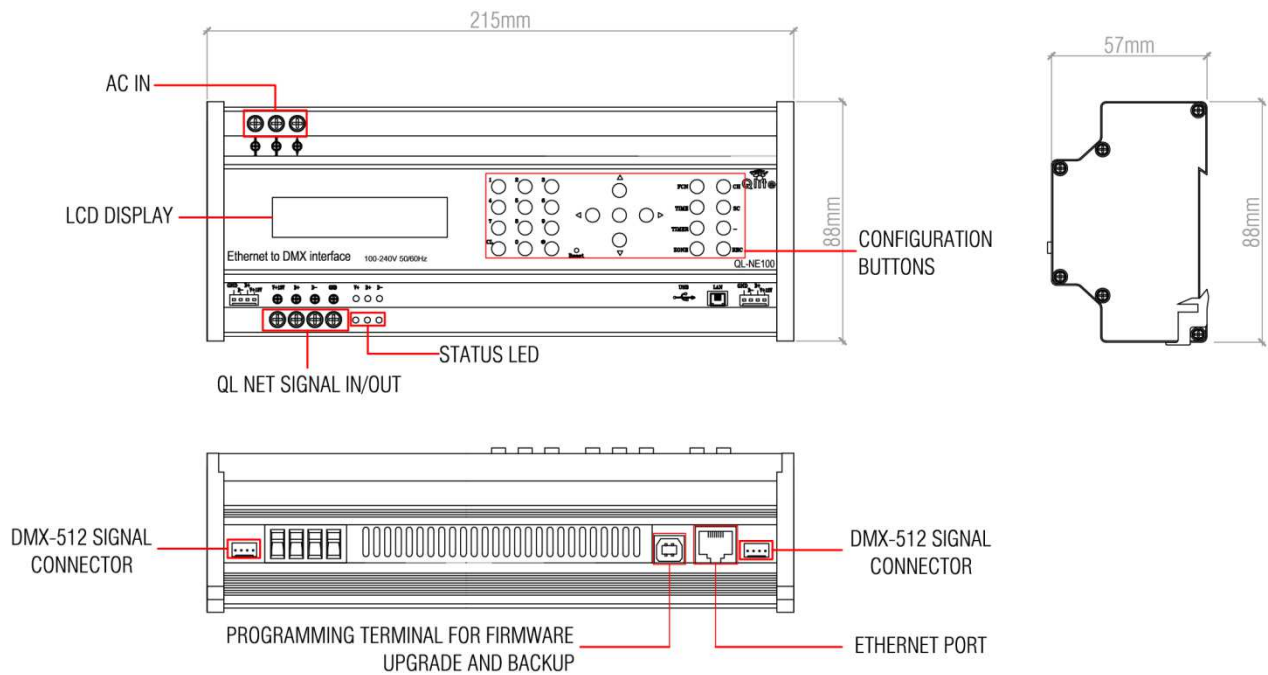


Fig 1. Module Details

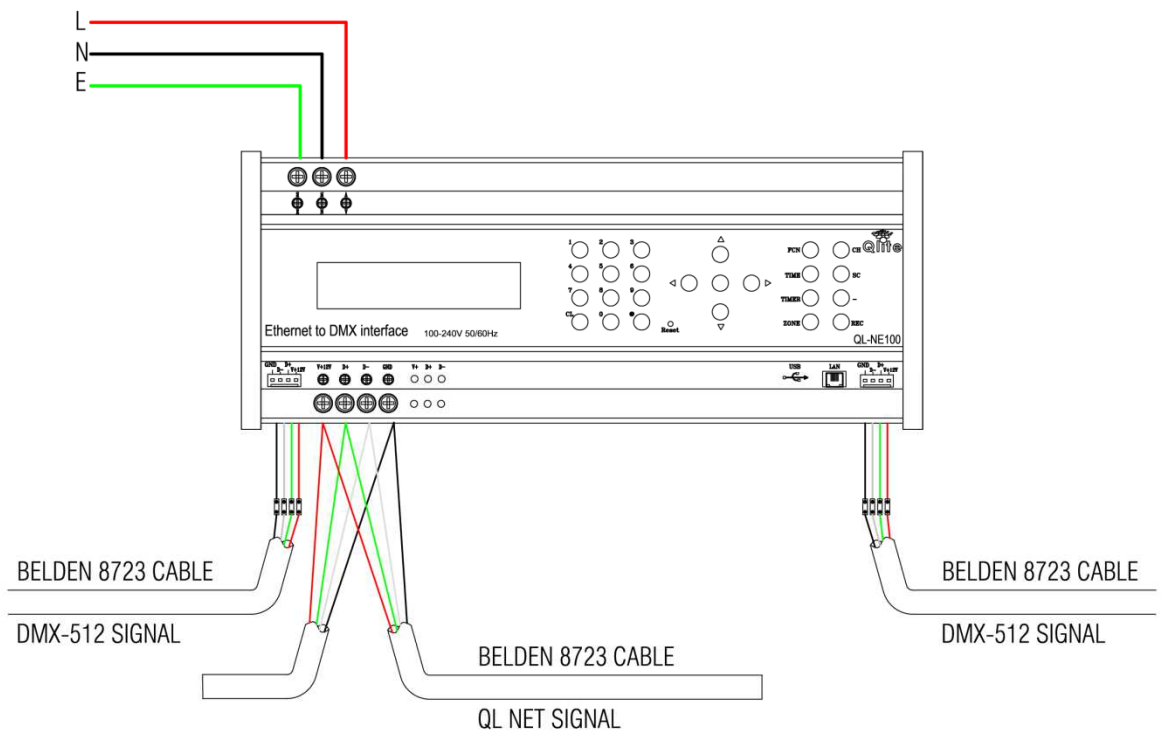


Fig 2. Module Connections

Typical Applications

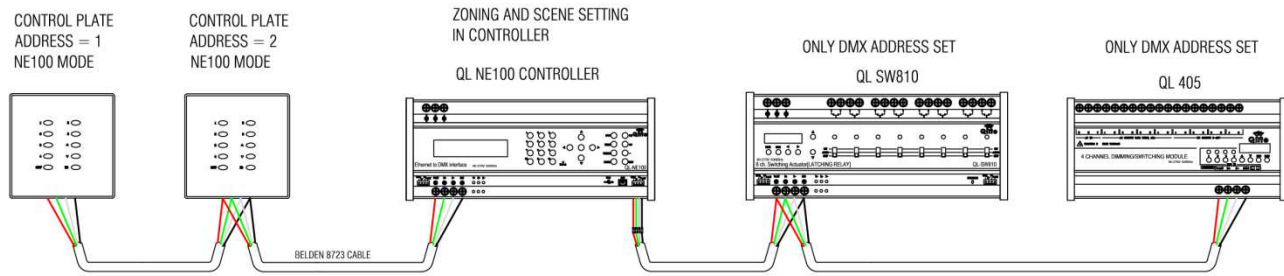


Fig 3. Simple Lighting Control Application

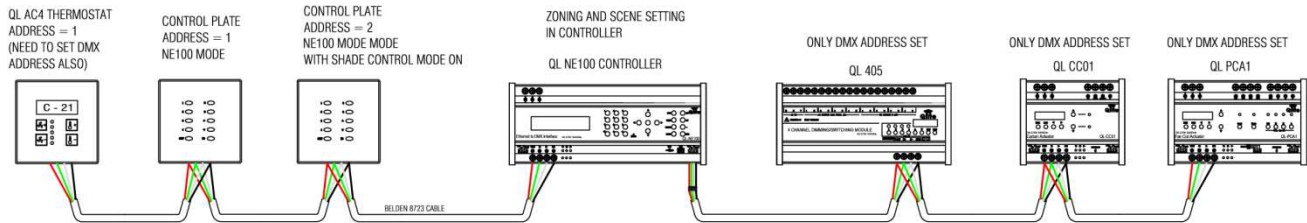


Fig 4. Lighting Control with FCU and Shade control Application

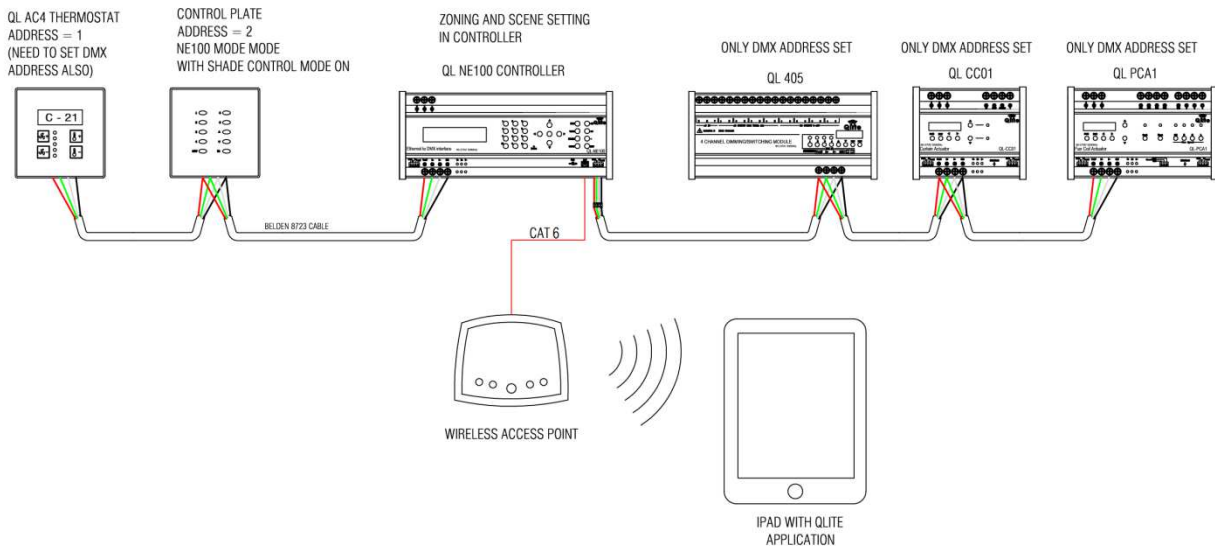


Fig 5. Automation with IPAD control over WIFI