

QL-IP2SL01

IP TO SERIAL INTERFACE MODULE

The QL IP2SL01 is a single port IP to Serial interface module. The module allows integrating audio visual equipment which can be controlled by serial commands. It allows control of such devices via iPad, Tablet or any other 3rd party android device. It has a robust construction with small size and can be installed easily hidden anywhere near the device to be controlled. The serial commands of the device are needed to set parameters for the serial port and program the commands.

Specifications

Power Supply

5 to 16V DC

Power Requirement

300mA

Protocol

TCP/IP

Connectors

TCP/IP: RJ45 connector

Serial Connector: Male DB9 Connector

1200 baud to 115 Kbaud data rates supported

Odd, Even, and None parity settings
Bi-directional with hardware RTS/CTS flow control

LED Indicators

Power and serial connectivity indicators

Certification

CE, FCC, RoHs



- *IP to Serial interface*
- *Serial parameter settings*
- *Controls any 3rd party device controllable via serial commands*

Environment

Ambient Temperature : 0°C to 50°C

Relative Humidity : less than 80%

Dimensions

83mm (L) x 57mm (W) x 32mm (H)

Weight

95g

QL-IP2SL01

IP TO SERIAL INTERFACE MODULE

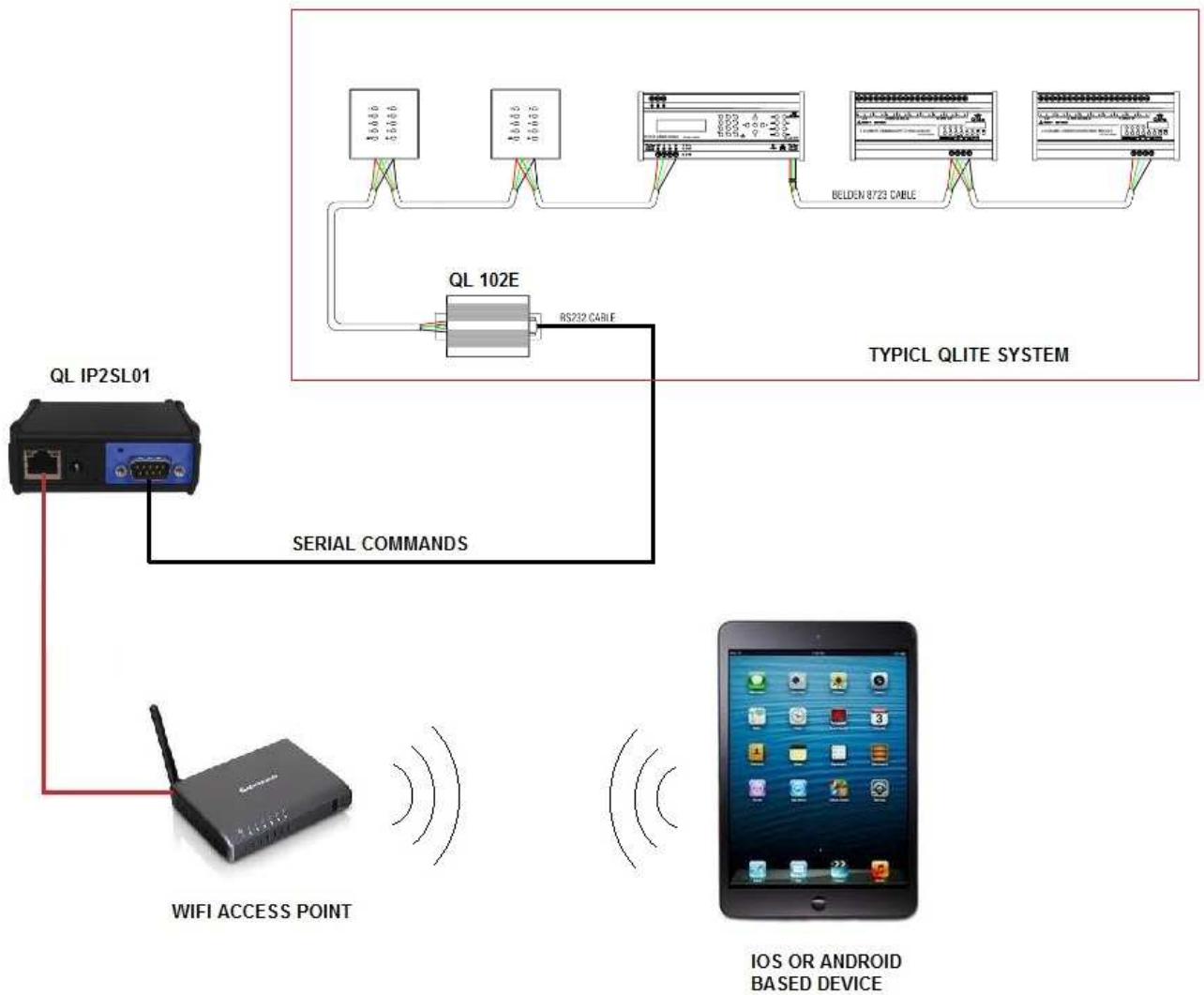


Fig 1. Module Application Diagram