

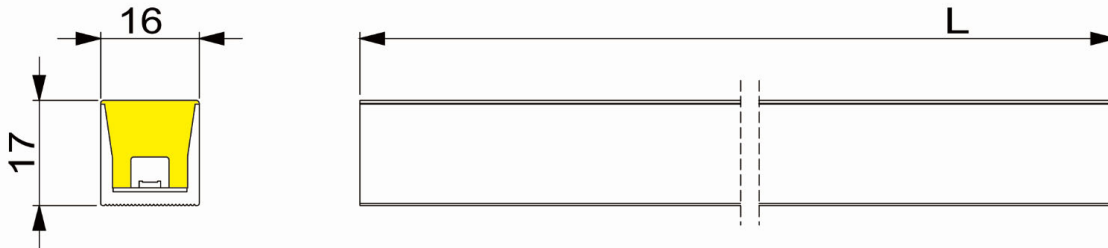


1. Features

- ❖ Vertical bend-able, body lighting
- ❖ Lumileds 2835 LED especially for strip products
- ❖ Dual-extrusion, diffused silicone lens and thermal conductive base
- ❖ UV and yellowish resistant
- ❖ IP68 and salt-mist proof
- ❖ LED Binning < 3 steps
- ❖ 12LEDs (125mm) per control unit cut-able
- ❖ L70B50 > 50,000hrs
- ❖ UL 94 V-0
- ❖ Easy installation and re-connect accessories
- ❖ Min. bending radius 10 cm

QL-AAC02-D

2. Dimensions



Notes:

1. Unit: mm
2. L = 10meters in standard configuration

3. Environmental and Application Conditions

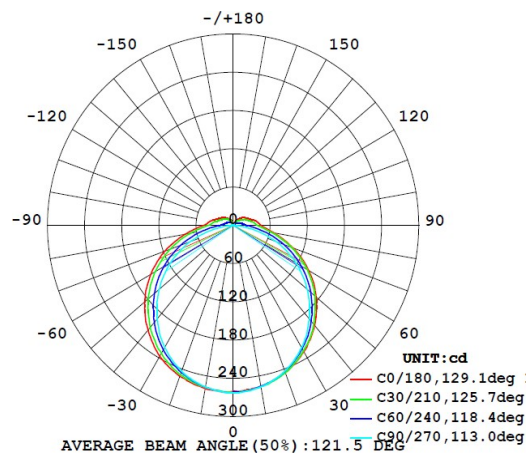
Ambient temperature range (TA on free air)	-40°C ~..+65°C
Operating (case) temperature range (TC)	-40°C ~..+65°C
Storage temperature range	-40°C ~..+85°C
IP rating	IP68

4. Electrical parameters

Supply voltage range	24.0±1.0 VDC
Supply Current range (per mtr)	Max. 440mA
Power range (per mtr)	12 W / Mtr
ESD protection	Contact 4KV, Air 8KV
Max. length for single end power-in	10mtrs
LED quantity	96 LED per meter
Cutting unit length	125 mm (12LEDs)
Control type	IC: UCS512, DMX512 control

5. Optical parameters

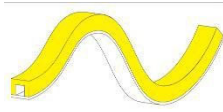
Part No.	Colorimetric Parameters		Lm flux / mtr
	Color	Ra	Full on
QL AAC02-D	2700	80	620
	3000	80	650
	4000	80	690
QL AAC02-D	RGB	80	510
	RGBW	80	490
	RGBA	80	486



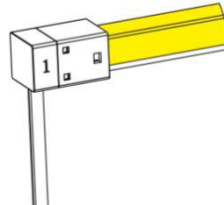
6. Connectors

Type 1, Soldering free power feed and endcaps

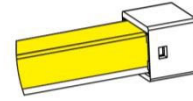
Lighting surface



IP68 feedin cable in bottom surface

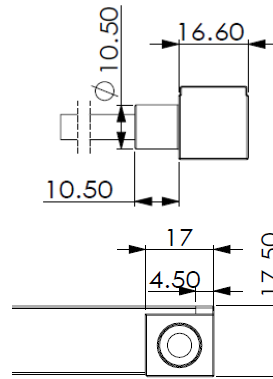
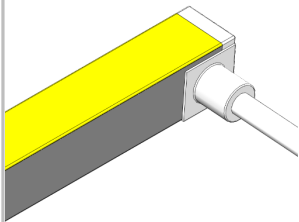


IP67/40 Endcap

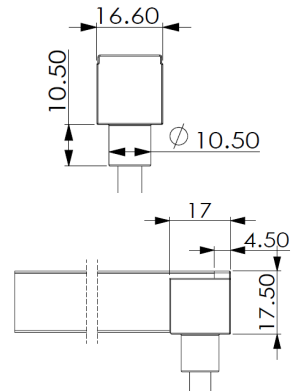
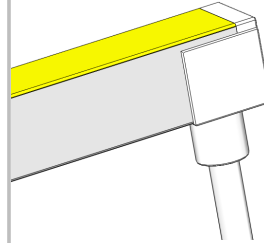


Type 2, IP68 power feed and end caps by molding

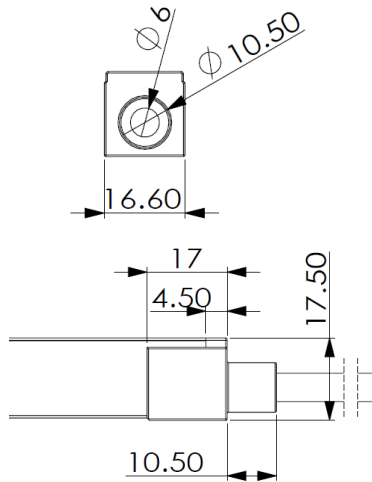
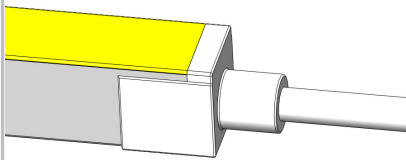
Side feeder



Bottom feeder



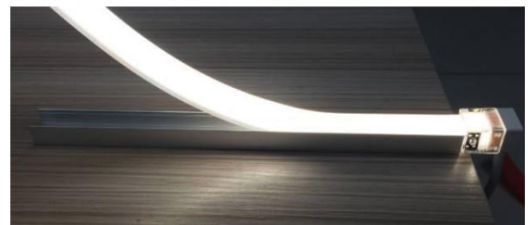
End feeder



Wiring:

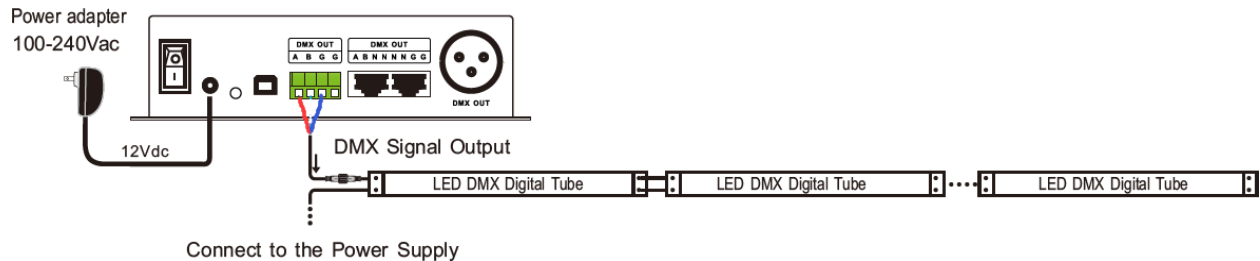


Single color product



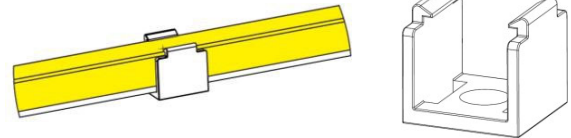
7. Wiring and IC information

1. IC P.N: UCS512, DMX512 signal
2. Cable: Red for Di connect to A, Green for Pi connect to W, White for Vcc, Blue for GND.
3. Wiring



8. Installation accessories

Type 1, transparent PC clips for indoor application



Type2, AL profile for outdoor application (1meter/pcs with 10pcs skidding keeper)



Type3, Al Clips for out-door application (5cm/pcs with 2pcs skidding keeper)



9. Attention

- a. Max. Length of LED neon is 10meters from power supplier to single end.
- b. The LED neon itself and all its components may not be mechanical stressed.
- c. Please ensure that the power supply is adequate power to operate the total load. Only qualified personnel should be allowed to perform installations.
- d. The design of the housing should be according to the IP standards in the application.
- e. If surge protection structure not within power supplier, a lightening protector should be needed additionally.
- f. Before cutting and making reconnection, please read the user manual, and please ensure you have read and fully understand it.
- g. Please do not twist the product and do not bend it in wrong direction, the only bending direction as following:

