

Qlite OAD Series

In terms of total cost of ownership, it's truly remarkable when outdoor displays require minimal maintenance, or even offer free maintenance for 5 to 7 years. To substantiate this claim, we introduce the Qlite Outdoor Display series. Whether it's the vivid color reproduction, diverse designs, or cost-saving maintenance features, these displays exemplify the current and future trends in outdoor display technology. Qlite remains steadfast in its commitment to innovation, continuously striving to pioneer even more exceptional products.



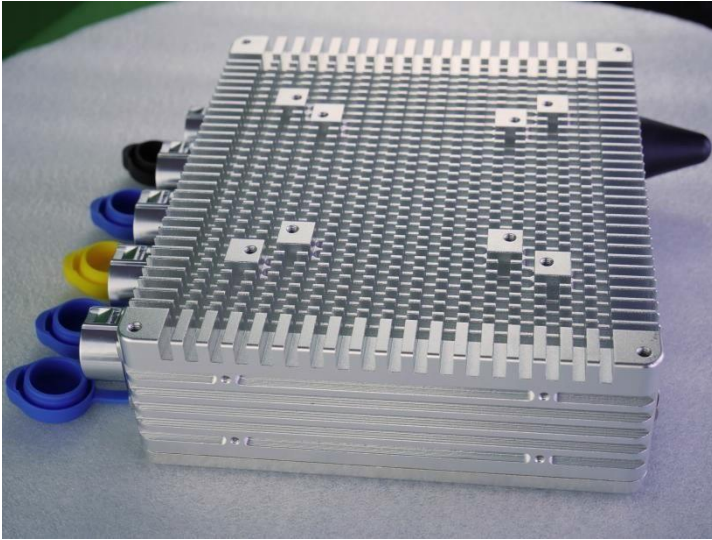
FEATURES

- Size available:75inch
- QLED Technique with 105% Color Gamut
- High Brightness 4000nits
- Weatherproof IP67 Level Protection
- Vandal-proof IK10 Level Protection
- Optical Bonded with Anti-reflective Glass
- Fanless + Filterless Design for Maintenance-FREE
- Wide Temperature Range Design
- High Temperature Design- No Blacken
- Auto Brightness Control

SPECS

Panel Information	Panel Size	75 inch
	Resolution	3840 x 2160 (4K)
	Brightness	4000 Nits
	Active Area (mm)	1630 * 920mm
	Viewing Angle	178/178
	Aspect Ratio	16:9
	Display Colors	1.6B, 105%
	LED Lifetime	≥ 50,000 hours
	Blackening Defect Free	Up to 110°C
	Orientation	Portrait & Landscape
	Brightness Control	Sensor Built-in
Mechanical	Bezel Width (T/B/L/R) (mm)	29.5/29.5/28.5/28.5
	Overall Dimensions	1661*935*129mm
	Net Weight (Display Only)	70KG
Connectivity	HDMI IN	X1
	POWER PORT	X1
	OSD Language	English
	Optional	External IP67 Media Player: Android OS/Windows OS
Special Features	Tempered Glass	Anti-Reflective Glass with IK10 Impact-resistant
	Process	Optical Bonded
	Weatherproof Design	IP67
	Cooling System	Fanless + Filterless
	Operating Temperature	-30°C ~ 55°C
Power	Power Supply	AC 110~240V
	Rated Frequency	50/60Hz
	Power consumption	75inch 500W

IP67 Media player



Operating System

Model	EKOMP-A
Operating System	Android 10.0
CPU	RK3288 Quad Core
RAM	4GB
ROM	32GB

Port

HDMI out	X1
USB	X2
POWER PORT	X1
WIFI, RJ45	X1

Environment

Operating System	-40°C ~ 55°C
Storage System	-40°C ~ 80°C

Power

Power Supply	DC12V
Rated Frequency	50/60Hz

Feature

Waterproof level	IP67
High temperature resistant	-40°C~85°C
Shell Material	Aluminium Alloys
Software	Content management system software(Android system support)

FEATURES

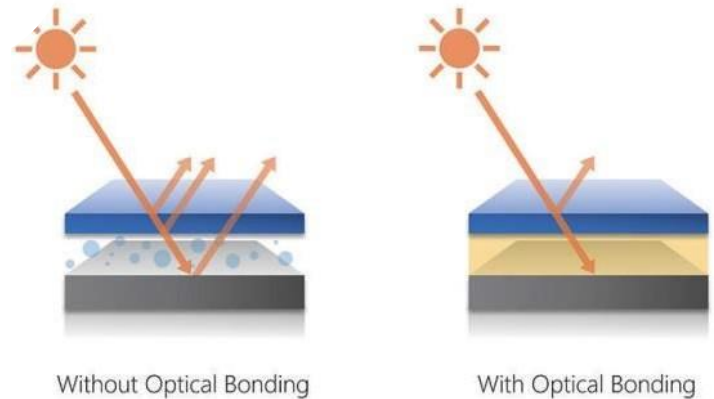


Sunlight Readable

With brightness reaching up to 4000 nits, Qlite Outdoor Displays ensure readability even in direct sunlight applications. This capability allows for the delivery of clear and attractive content to viewers, regardless of their location.

Optical Bonding Processed & Reflection Prevention

Qlite outdoor LCD displays feature full lamination with anti-reflection glass, effectively eliminating the air gap between the LCD panel and tempered glass. This innovation enhances brightness, reduces reflection, and improves contrast ratio, resulting in a display with a wide 178/178 viewing angle. As a result, images appear richer and clearer even under direct sunlight.

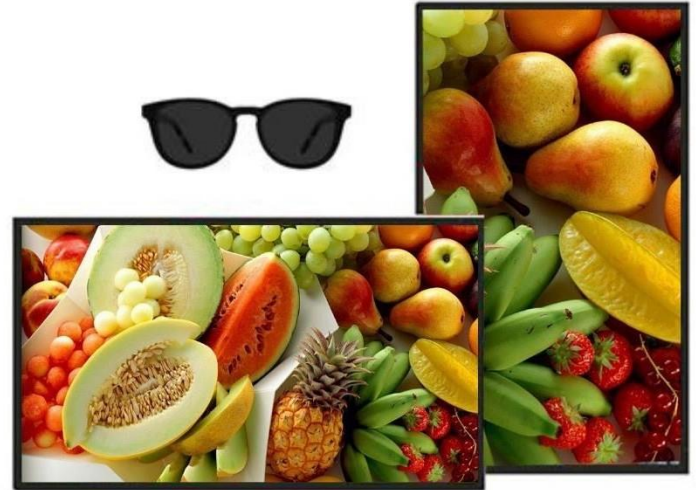


QLED with fantastic 105% color gamut

Qlite Outdoor Displays utilize QLED technology for heightened visual impact, boasting 30% increased brightness and a 105% color gamut. Positioned at the forefront of this trend, Qlite recognizes the pivotal role of QLED in enhancing viewer comfort and optimizing the effectiveness of advertising messages on commercial displays.

(Optional) Viewable with Polarized Sunglasses

Enables clear visibility even when the viewer is wearing polarized sunglasses



Smart Brightness Control

Saving on operating expenses and power consumption cannot be overlooked when using Qlite Outdoor Displays in outdoor environments. Equipped with a built-in auto brightness sensor, these displays automatically adjust their brightness at night to mitigate light pollution and prolong their lifespan. Total Cost of Ownership is another crucial factor for users to consider.

Wide Temperature Range

With a wide temperature design implemented in the LCD panel, motherboards, and even the aluminum and stainless steel enclosure, Qlite outdoor displays can operate seamlessly 24/7/365, enduring hot or cold weather conditions effortlessly.



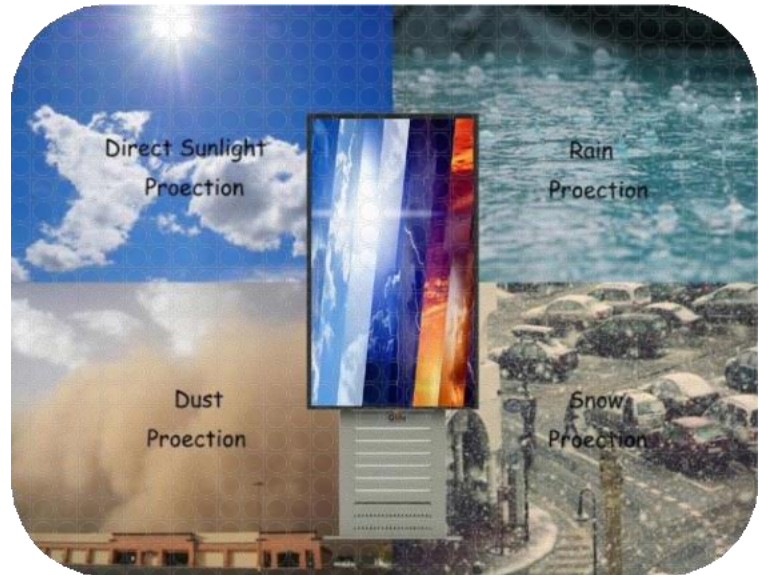


No Blacken

Even under direct exposure to sunlight, the Qlite display resists blackening defects up to 230°F / 110°C.

Weatherproof IP67

Qlite Outdoor Displays sealed with IP67-rated enclosure, designed for not only waterproof but also weatherproof against the damaging effects of the sun, rain, snow, dust and wind.



IK10 Safety Glass

Covered with IK10-rated impact resistant tempered glass, protects the screen against vandalism and debris.

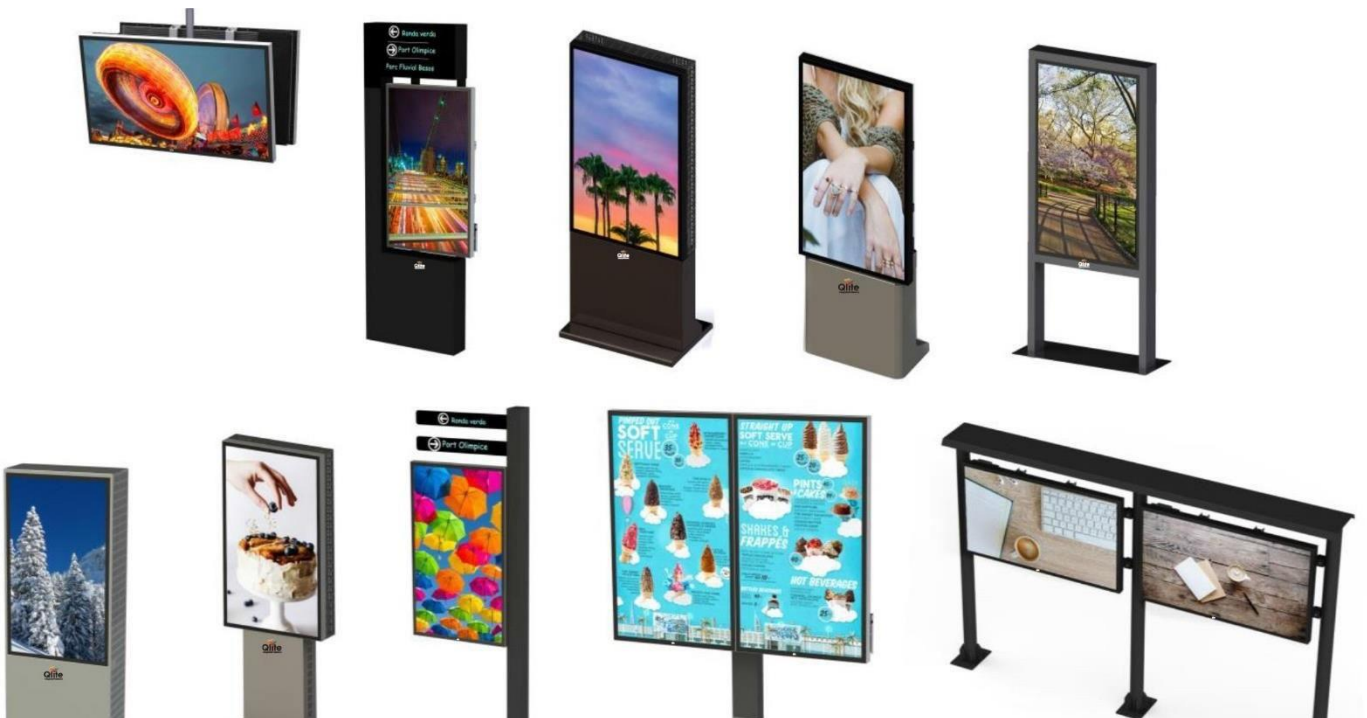
Maintenance Free

Maintaining hundreds of displays across various locations can be incredibly challenging and costly in terms of maintenance and labor. However, with a guaranteed air-cooled system and a fanless, filterless enclosure, Qlite Displays offer a cost-saving solution. This design not only reduces expenses but also ensures reliability across diverse applications, allowing users to confidently deploy displays without constant oversight.



Diversified Design

An already-finished model facilitates diversified designs for various applications. Users need not fret over waterproofing the enclosure but must ensure adequate ventilation for optimal performance



APPLICATIONS





KFC



Outdoor GYM



Mall



Gas station



Theme park



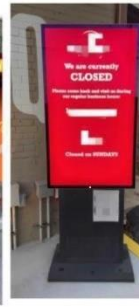
Entrance



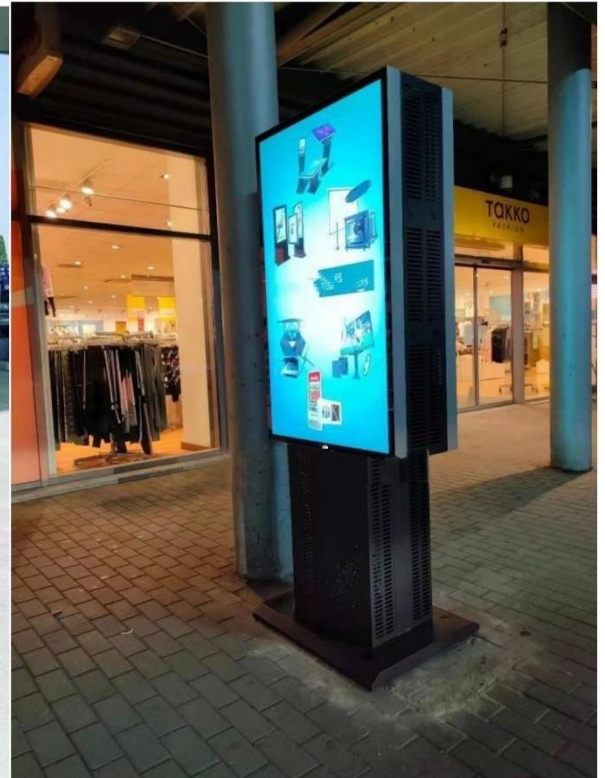
Car wash



Drive thru system & Outdoor menu-board



Charge station



shopping mall