



# QLID SERIES INDOOR LED DISPLAY CABINET

[ QLID INDOOR SERIES ]



## FAST AND EASY MAINTENANCE

Fast installation mechanism; fast and easy maintenance.



## AUTOMATIC ALIGNMENT MECHANISM

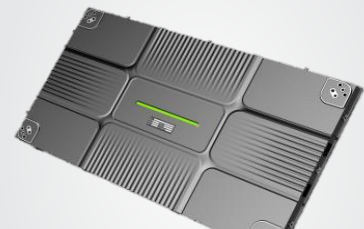
Integrated die-cast housing for ruggedness and reliability. Quickly assembled connectors and automatic alignment mechanism for quick installation by one person.



## THIN AND LIGHTWEIGHT

Allows in shipping cost and installation cost.

## PRODUCT IMAGES



# TECHNICAL PARAMETERS

Item	QL-ID-FXP1.250	QL-ID-FXP0.9
	<b>Module Information</b>	
Pixel Pitch /mm	1.250	0.9
Encapsulation Mode	SMD	SMD
Module size/mm (HxW)	168.75x150	168.75x150
Resolution /pixel (HxW)	135x120	180x160
LED CHIP	Epistar	Epistar
Wave length for LEDs	R=620-625 nm G=520-525 nm B=470-475 nm	R=620-625 nm G=520-525 nm B=470-475 nm
	<b>Cabinet Information</b>	
Cabinet size /mm (HxWxD)	337.5x600x29	337.5x600x29
Physical Resolution /dot ( H x W)	270x480	360x640
Density pixel/cabinet	129,600	230,400
Ruggedness	IP30	IP30
Material	Aluminium	Aluminium
	<b>Screen Information</b>	
Physical Information		
Screen Size /face (HxW) (M)	3.71 x 6.60	1.35x2.40
Resolution /face (HxW)	2970 Pixel x5280 Pixel	1440 Pixel x 2560 Pixel
Maintenance	Front Service (magnet)	Front Service (magnet)
	<b>Electrical &amp; Photoelectrical</b>	
Brightness	≥800 Nits	≥800 Nits
Contrast	600:1	600:1
Colour temperature	3200 to 9300 (Adjustable)	3200 to 9300 (Adjustable)
Processing Color	16 Bit per color	16 Bit per color
Viewing angle	160°H /160°V	160°H /160°V
Viewing Distance	≥ 1 Mtr	≥ 0 Mtr
Refresh rate	3840 Hertz	3840 Hertz
Drive Type	1/30 Scan	1/30 Scan
Power supply	AC100-240V (±10%)	AC100-240V (±10%)
I/P Voltage & I/P power frequency	90 V-264 V & 47/63Hz	90 V-264 V & 47/63Hz
Operating temperature	-30°C ~ + 60° C	-30°C ~ + 60° C
Power consumption	800 watt/sqm (max) & 250watt/sqm (min)	800 watt/sqm (max) & 250watt/sqm (min)

# TECHNICAL PARAMETERS

Lifetime	100,000 Hours	100,000 Hours
	Control system	
Control Method	Synchronous (Computer(+video processor)+sending card +multifunction card+receiving card	Synchronous (Computer(+video processor)+sending card +multifunction card+receiving card
Processing Depth	16 Bit	16 Bit
Multimedia Data Format	MPG,AVI,WMV,RM etc.	MPG,AVI,WMV,RM etc.
Video Input	DVI, HDMI, PAL/NTSC/SECAM;S-Video; VGA; RGB; Composite Video; SDI etc.(With Video Processor)	DVI, HDMI, PAL/NTSC/SECAM;S-Video; VGA; RGB; Composite Video; SDI etc.(With Video Processor)
Data interconnection	Cat 5E UTP /Optic Fiber	Cat 5E UTP /Optic Fiber
Transmission Distance	Multi mode fiber <500m, Single mode fiber < 30Km, internet cable <100m	Multi mode fiber <500m, Single mode fiber < 30Km, internet cable <100m
Other	CE	CE